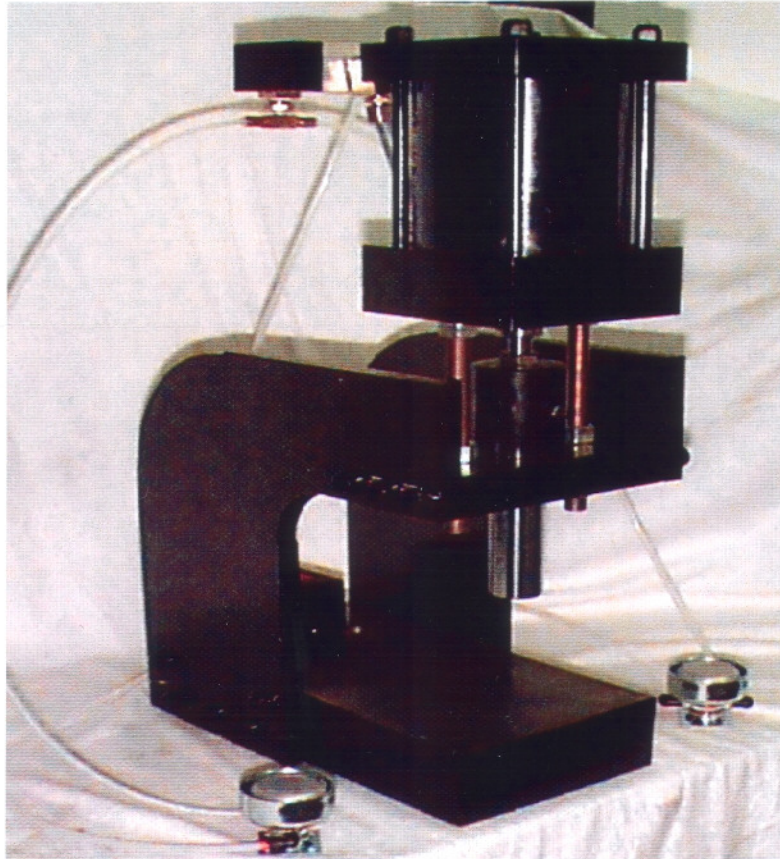




AIR POWERED PRESS

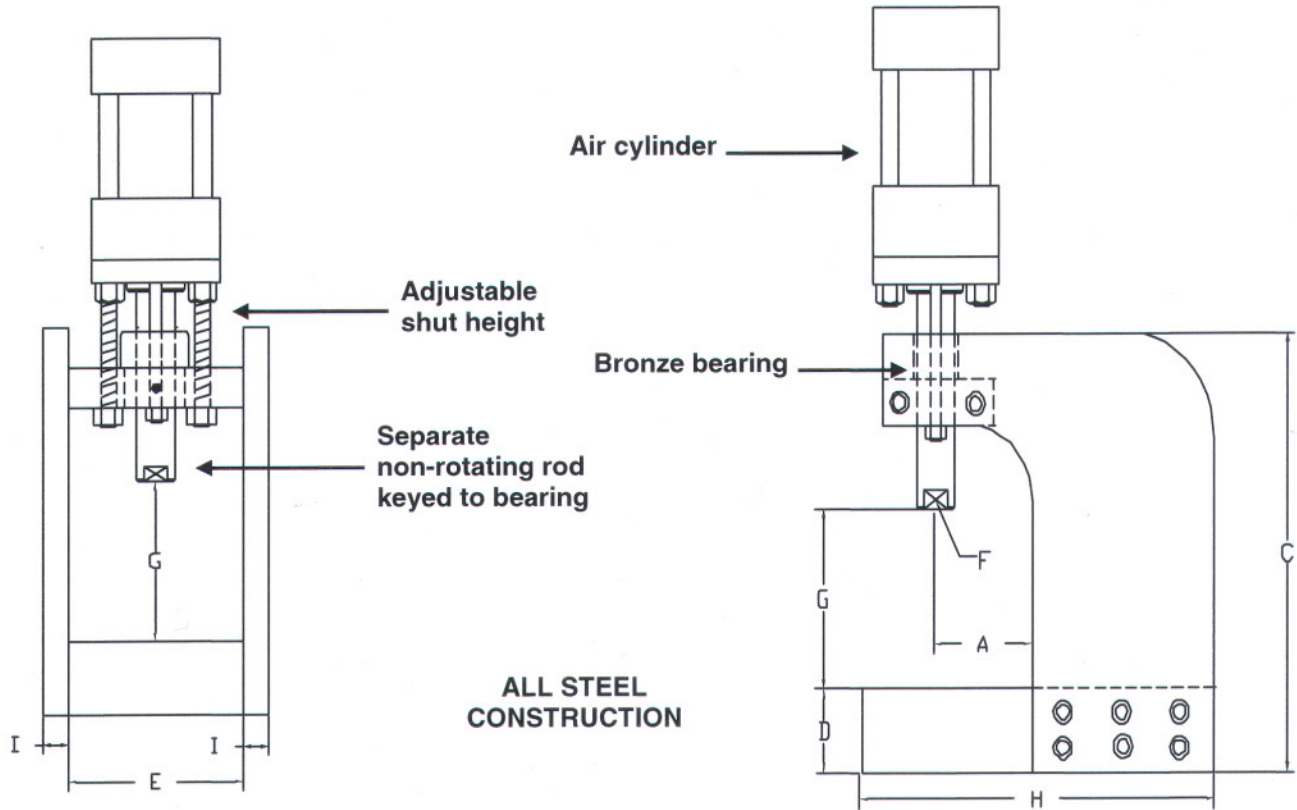


We use our heavy duty NFPA cylinder and mount it to a rugged, yet compact C Frame. Our unique design allows for a stroke adjustment and a non-rotating rod for accurate repeatability.

- ◆ Easy press breakdown for installation of tooling and fixture
 - ◆ Large base plate allows for stable work platform
- ◆ Throatless design allows long parts to be passed through centerline of press
 - ◆ Complete control package available - just plug into air supply
 - ◆ Custom platform or C-Plates available
 - ◆ Economical and easy to repair

1330 Sutton Drive, PO Box 5011 Burlington, ON L7R 3Z4
Phone 905-335-2211 / 1-877-CALL-HES
Fax 905-335-8756 / 1-800-858-0893
www.higginson.ca

SPECIFICATIONS



Press Dimensions Inches

| A | B | C | D | E | F | G* | H | I |
|-----|-------|----|---|---|------------------|-----|----|-----|
| 5.5 | 8.875 | 17 | 3 | 8 | 5/8-18 x 2" deep | 9.5 | 16 | 5/8 |

*based on 1" Stroke

Power Factors at 80 PSI

| Cylinder | Force lb | Stroke | Model Number |
|---------------|----------|---------|--------------|
| 3. 1/4 bore | 664 | 1" - 6" | HD-115-325 |
| 3. 1/4 tandem | 1265 | 1" - 6" | HD-115-325T |
| 4" bore | 1006 | 1" - 6" | HD-115-400 |
| 4" tandem | 1948 | 1" - 6" | HD-115-400T |
| 5" bore | 1570 | 1" - 6" | HD-115-500 |
| 6" bore | 2262 | 1" - 6" | HD-115-600 |

How to Order

