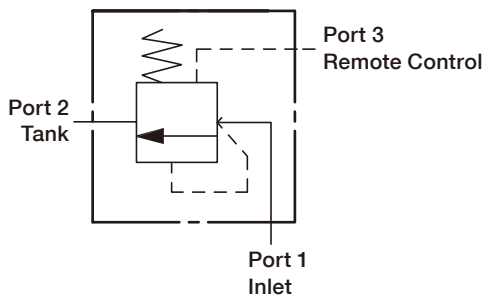


# LRC



## SYMBOLS



## ORDER CODES

**LR 2 C - T11A - X D N**

1 2 3 4 5 6 7

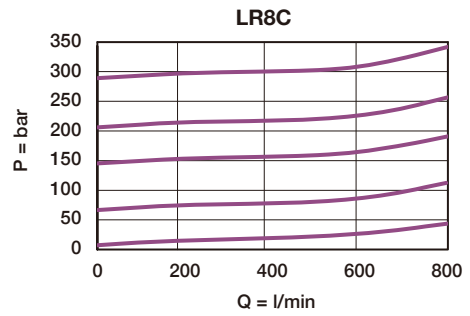
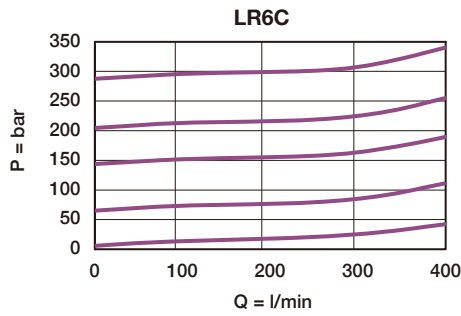
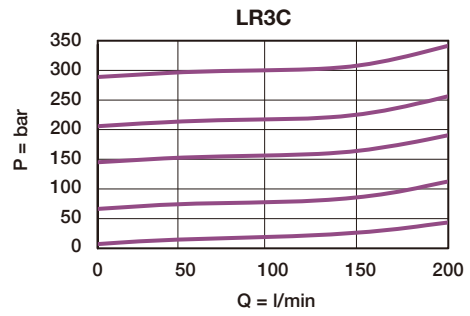
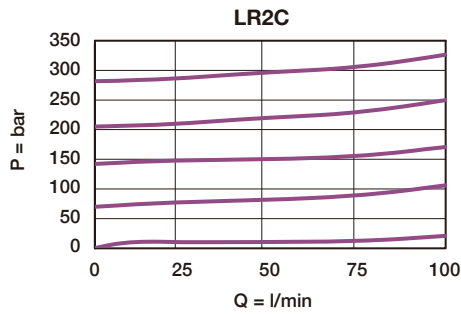
1	▶ Model Name	LR
2	▶ Valve Size	2, 3, 6, 8
3	▶ Type	C external pilot
4	▶ Cavity	T11A, T2A, T17A, T19A
5	▶ Control Manner	X unadjustable
		L standard screw adjustment
6	▶ Cracking Pressure	D 3.5 bar
		F 7.0 bar
		G 10.0 bar
7	▶ Material of Seal	N buna-N
		V viton

## MODEL SPEC.

Model	Cavity	Capacity (l/min)	Max. Pressure (bar)	Installation Torque (Nm)	Operational Temperature	Weight (kg)
LR2C	T11A	60	350	40/50	-35 ~ 100°C (-31 ~ 212°F)	0.12
LR3C	T2A	120	350	60/70		0.22
LR6C	T17A	240	350	200/215		0.50
LR8C	T19A	480	350	465/500		1.15

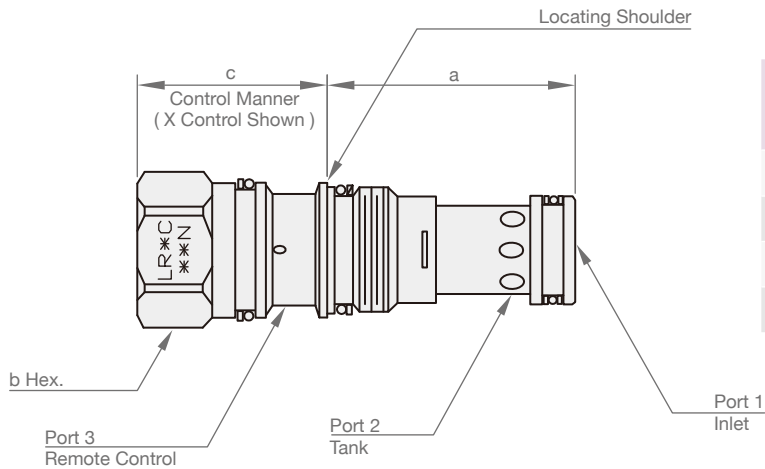
## PERFORMANCE CURVES

### ► Typical Pressure Drop



## DIMENSION

( UNIT : mm )



Model	a	b	c	
			X	L
LR2C	34.9	22.2	31	64
LR3C	34.9	28.6	35	72
LR6C	46.0	31.8	46	84
LR8C	63.5	41.3	59	100